

PERSPECTIVE
VMS

**UNIFIED VIDEO INTELLIGENCE
FOR REAL-TIME SECURITY**

A PRODUCT BY **LENSEC**

LENSEC

PERSPECTIVE
VMS

SMOC

LINE

TITAN

PAR

LAOS

WHY PERSPECTIVE VMS?

Perspective VMS® is an enterprise-level video management software developed by LENSEC, a thin-client application that operates in modern web browsers through an easy-to-use graphical interface. As an agile approach to work, product improvements are implemented rather quickly and in short cycles.

- Built with partners & end-users input
- IoT ready for any IP security devices
- Deploy in the cloud, on-premises, or as a hybrid security system
- Built with HTML5 as a browser-based software
- Designed with cybersecurity in mind
- Go mobile with tablet or smartphone access
- Connect network security devices in a Unified Security Platform
- Monitor security footprint remotely using enterprise tools
- LENSEC helps with Remote Status Monitoring and other Professional Services





VALUE PROPOSITION



Workflow



Dynamic Maps



Unified Platform



Dashboard



Integration



Video Analytics



Forensic Search



Fleet Module

DASHBOARD

View security events & system health in custom-made visual boards that fits your operational needs.



- Create multiple dashboards for different users based on their needs.
- Select from a list of predefined widgets.
- Adjust the size & location of widgets based on the data to be displayed.
- Get live updates of new events & changes.

MAPS

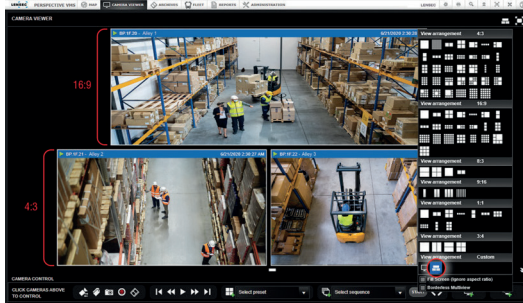
Quickly identify camera locations, obtain real-time situational awareness, view live-streaming video.



- Hover over camera icons to display live video in a pop-up window.
- Dock the cameras for a continuous view of live video.
- View Cameras and devices status on the map.
- Interact with devices like access door readers.
- Locate cameras and other system assets using live GIS-maps.

CAMERA VIEWER

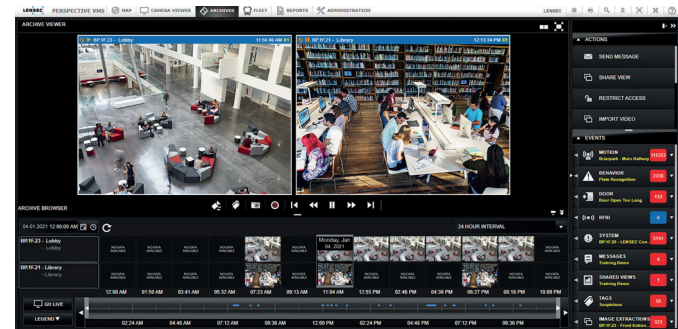
Select from a wide range of viewing layouts. Your custom preset views and sequences can be saved and recalled in the graphical interface.



- Call-up live video from multiple sites simultaneously.
- Rewind and playback video without leaving the camera viewer.
- Track moving targets through a facility using the Neighboring Cameras feature.
- Start recording in real-time using the Extract tool.
- Verify third-party captured events in real-time.

ARCHIVES

Begin forensic analysis by accessing stores of pre-recorded video.

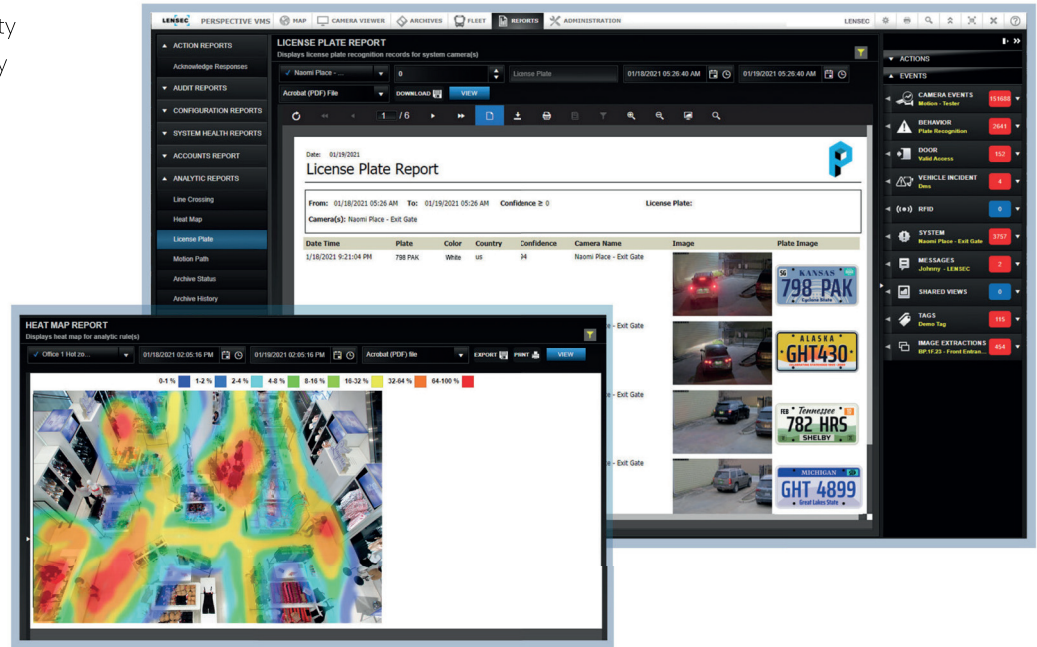


- Search motion video activity detected by security cameras using the Fast-Find feature.
- Search previously recorded video using the interactive timeline and image thumbnails.
- Create recorded video extractions simultaneously.
- Download extracted video into a standard media file.

REPORTS

Gain insight on system health details, including camera status, user login activity, archive stores, and more.

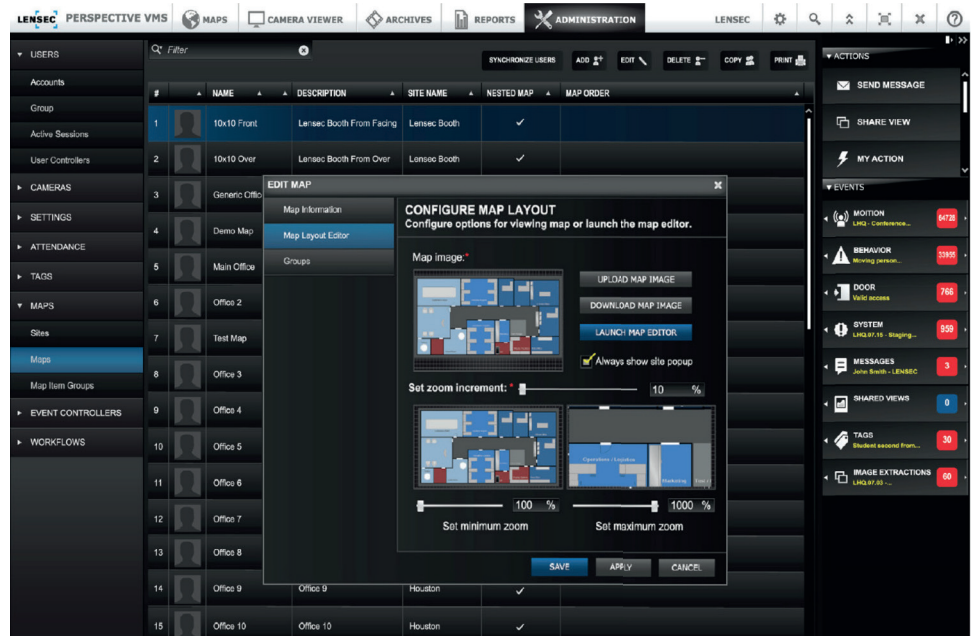
- Learn details about user activity history in the Access Log Query Report.
- Display categories of behavior-based events using Video Analytic Reports.
- Tag Fleet Vehicle Incidents so their easy to find later.
- Discover data about actions and triggers for automated processes in Workflows.



ADMINISTRATION

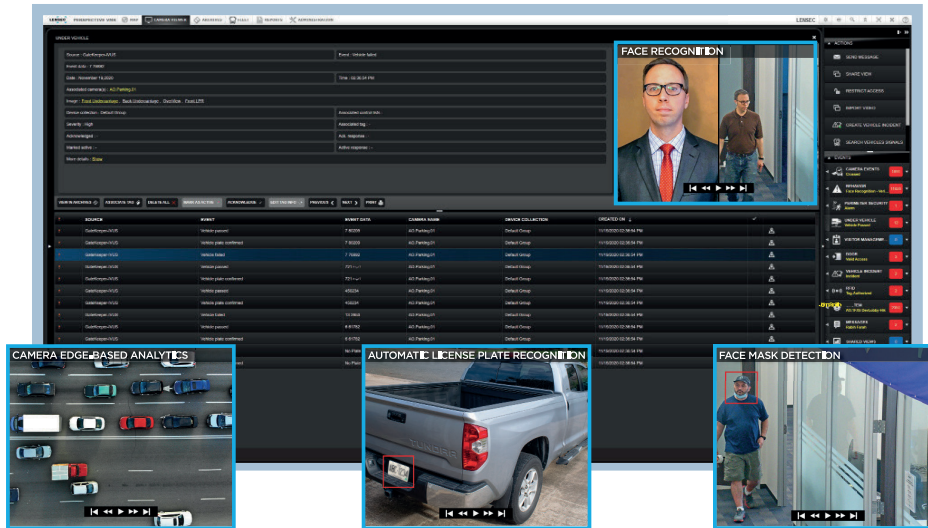
Configure and manage system-wide settings from anywhere on the network in the browser-based application.

- Configure network-connected IP security devices within PVMS.
- Manage users efficiently through group-assigned permissions.
- Balance archives across multiple drive locations.
- Securely access the system via Active Directory single sign-on.



VIDEO ANALYTICS

Leverage advanced algorithms and smart technology to trigger immediate action, and reduce false alarms. We offer these video analytics and more.



Traffic Management

- ▣ Vehicle Counting
- ▣ Average Speed
- ▣ Wrong Way Traffic
- ▣ Stationary Vehicle

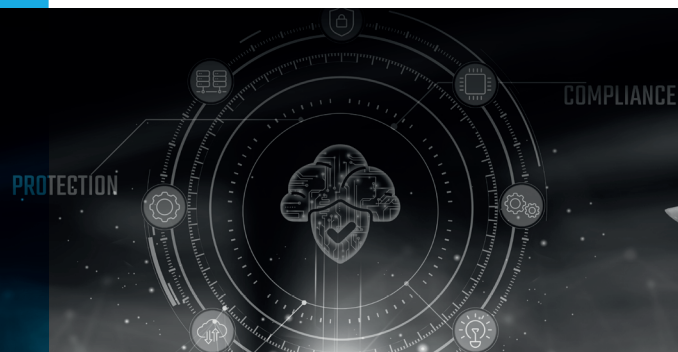
Facilities Management

- ▣ Intrusion Detection
- ▣ Left / Stolen Object
- ▣ Parking Lot
- ▣ Slip / Fall Detection

Crowd Management

- ▣ Occupancy Rate
- ▣ Heat Map
- ▣ Gate Flow
- ▣ Area Counting

INTEGRATED PHYSICAL SECURITY PLATFORM



OUR VISION

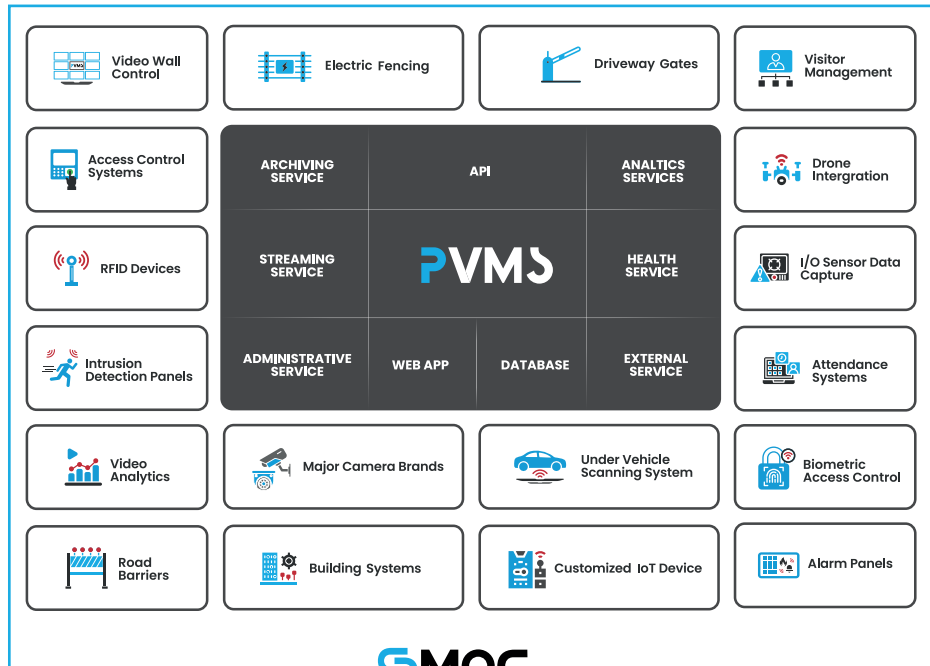
Transforming the way organizations & communities deal with physical security.

PERSPECTIVE VMS® INTEGRATES WITH THIRD-PARTY HARDWARE & SOFTWARE THROUGH **SMOC**

- Access Control
- Intrusion Detection Panels
- Radio Frequency Identification
- Video Analytics
- Fire Alarm Panels
- Under Vehicle Surveillance Systems
- IoT Devices
- I/O Interfaces
- Electronic Fence Hardware
- Server Health Monitoring
- Video Wall
- Custom Hardware & Software

INTEGRATION

Extend the capabilities of PVMS using integrations with third-party software and hardware.



WORKFLOWS

Automate standard operating procedures with If-This-Then-That logic. Individual events can trigger various actions simultaneously.

EXAMPLES :

IF a door is forced open - THEN an email with a video clip is sent to security.

IF a security gate is opened - THEN the video resolution and frame rate increases.

IF a perimeter is crossed - THEN a PTZ camera changes position.

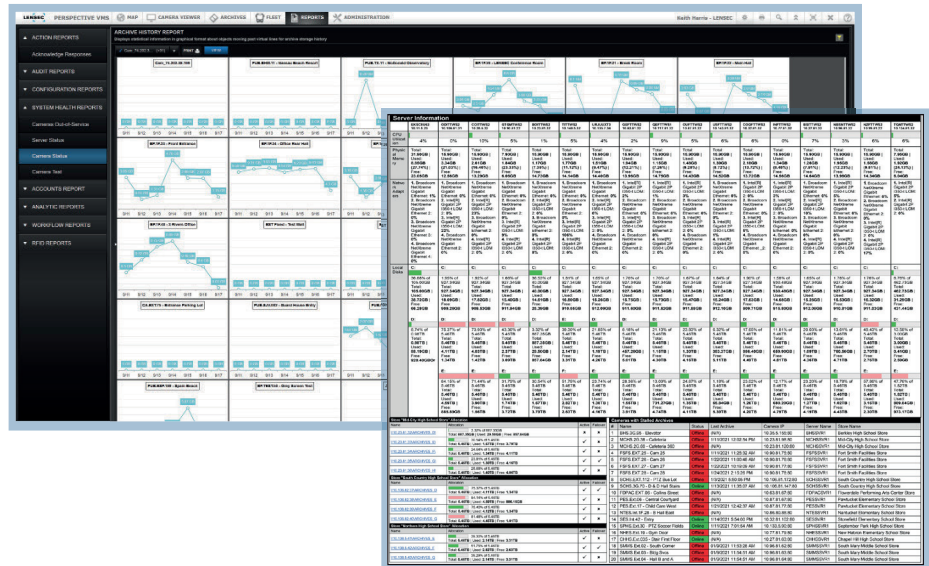
IF an unrecognized person attempts access - THEN road-blockers are engaged.



SYSTEM HEALTH

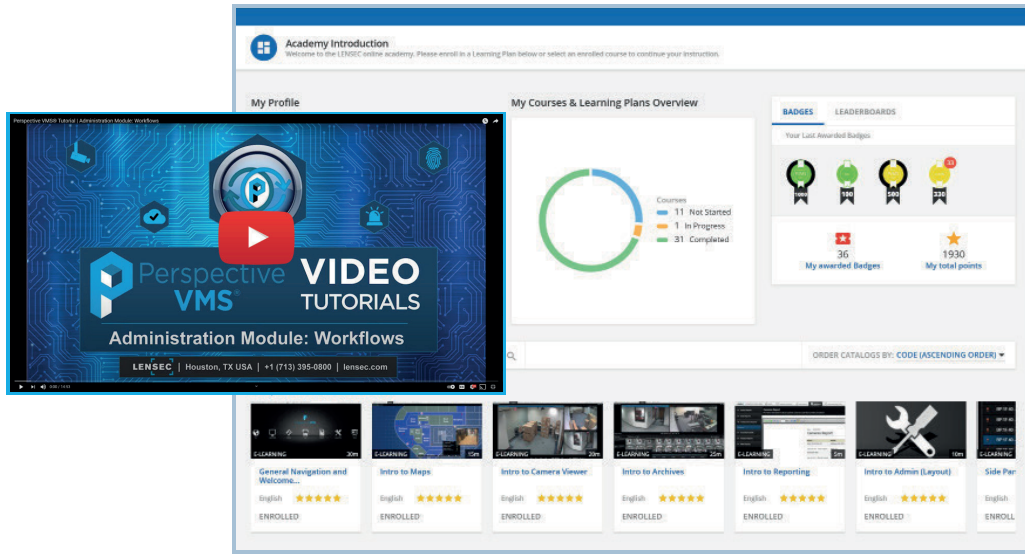
Spot vulnerabilities on servers, cameras, IP-devices, and overall security system health.

- Learn more about how the system is archiving stored video.
- See camera information including, IP address, support ticket details, and more.
- Receive advanced server health alerts for appliances by Razberi Technologies.
- Get help from the LENSEC team with Remote Status Monitoring.



TRAINING

Take free training, including online classes and technical certification.
Instructor-led courses are held virtually and in-person.



- Learn how to use and install the software from experts.
- Take the PVMS Online Training Academy at your own pace.
- Access video tutorials for software operations from within the PVMS interface.

SUPPORT

You can rely on LENSEC to deliver not only leading software solutions but also peace of mind with proactive monitoring, technical support, and system maintenance to ensure the highest reliability and success of LENSEC systems.

SOFTWARE MAINTENANCE PLUS (SMP)

- Access to software updates, major and minor, providing newer functionalities and improved software stability.
- Software technical support through phone or email.
- Up to 8 hours of LENSEC Professional Services (Remote).
- Preferred pricing on select LENSEC software products and professional services.
- Available in one or multi-year bundles.

REMOTE STATUS MONITORING (RSM)

- All Features above in "Software Maintenance Plus".
- Continuous monitoring of your security installation by LENSEC expert team to ensure maximum uptime of your system.
- Notification of exceptions via email.
- Emergency Situation Support (ESS).
- Server assessment reports, remote diagnostic support and remote hardware support are offered in this support plan.
- Support of hardware related issues through common troubleshooting.

NETWORK VIDEO APPLIANCE

LENSEC offer network video appliances streamlined for installation and designed with efficiency.

- Perspective VMS optimized servers for enterprise physical security deployments.
- Validated performance for live streaming and archiving.
- Series of models for different deployments small, medium, and large critical infrastructures.
- Powered by Dell® technology.
- Extended 5 Year, Next-Business Day warranty.



PRODUCT FEATURE MATRIX

Feature Set	Express	Standard	Professional	Enterprise
Number of Users / Client Workstations	Unlimited	Unlimited	Unlimited	Unlimited
Number of Cameras	24	1,000	Unlimited	Unlimited
Number of Servers	1	10	Unlimited	Unlimited
Browser-based with Administration Module	✓	✓	✓	✓
Multi-Language Support	✓	✓	✓	✓
Global Search	✓	✓	✓	✓
Multi-view / Multi-Monitor	✓	✓	✓	✓
Mobile Device (Android, iOS)	✓	✓	✓	✓
Maps Integration with Live Viewing	✓	✓	✓	✓
Simultaneous Live / Archive Viewing	✓	✓	✓	✓
Configuration / Health / Analytics Reports	✓	✓	✓	✓
Open API	✓	✓	✓	✓
Video Tagging	-	✓	✓	✓
Virtual Machine Support	-	✓	✓	✓
Share View	-	✓	✓	✓
Neighboring Camera Associations	-	✓	✓	✓
Time-lapse Extractions	-	✓	✓	✓

PRODUCT FEATURE MATRIX

Feature Set	Express	Standard	Professional	Enterprise
Multisite / Interlink	Remote Site	Remote Site	Central & Remote Site	Central & Remote Site
Archive Locking	-	-	✓	✓
Archive Timeline Forensics	-	-	✓	✓
Video Importing	-	-	✓	✓
Advanced Workflow Logic	-	-	✓	✓
Embedded Camera Live Events	-	-	✓	✓
Archive Encryption	-	-	✓	✓
Dashboard – Basic	-	-	✓	✓
Dashboard – Full	-	-	-	✓
Linked Cameras	-	-	-	✓
Failover	-	-	Add-on	✓
Active Directory	-	-	Add-on	✓
Live Maps / GIS	-	-	Add-on	✓
Forensic Search	-	-	-	Add-on
Fleet Module	-	-	Add-on	Add-on
Access Control Integration	-	-	Add-on	Add-on
Video Analytics	-	-	Add-on	Add-on

TECHNOLOGY PARTNERS



PERSPECTIVE

VMS

 Schedule a demo: lensec.com/sales

 facebook.com/lensec

 twitter.com/lensec

 linkedin.com/company/lensec-llc

 youtube.com/lensec

A PRODUCT BY **LENSEC**