



# Perspective VMS<sup>®</sup>

## Product Datasheet

### LENSEC Solar Solution with Perspective VMS<sup>®</sup>

LENSEC is providing a solution for physical security projects at remote locations with little to no infrastructure. Many companies find a need for security cameras at these sites, though they have no standard network capabilities or utilities to support long-term deployment. Oil and gas well sites and parking lots are examples of areas using LENSEC's solar solution running Perspective VMS<sup>®</sup> to monitor remote sites within a unified security platform.

LENSEC solution engineers have selected ruggedized servers, solar panels and controllers, along with other rugged components that can be combined to provide a complete solution, including an option that includes 4G LTE communication to deliver video and data to the head-end location.

Users now have the ability to remotely access live video, recorded video, and receive notifications when activity is detected at the site. This means less equipment theft and vandalism, less need for staff to travel site-to-site, and quicker response time to unauthorized site access due to better monitoring and forensic investigation of events as they occur.



#### Solar Solution Deployment Examples

##### OIL & GAS WELL SITES

###### OBSTACLES

- No Buildings
- No Utilities
- No Network Connectivity
- Unmanned Site
- Extreme Environment

###### SOLUTIONS

- Self-Supporting
- Solar Power
- 4G LTE Connection
- Remote Monitoring
- Ruggedized Equipment

##### PARKING LOTS

###### OBSTACLES

- Span Many Acres
- Distant From Buildings
- Limited Power
- Expensive to Trench

###### SOLUTIONS

- Ideal Perimeter Coverage
- 4G LTE or Direct Network Connection
- Solar Power
- No Trenching Necessary

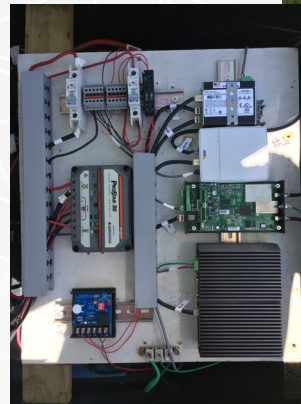
##### CONSTRUCTION SITES

###### OBSTACLES

- Targetted by Thieves
- Short-Term Need
- Pre-Infrastructure

###### SOLUTIONS

- Advanced Notification
- Trailer Deployment as Needed
- Self-Supporting Power & Network



#### Solar Solution Features

- Perspective VMS<sup>®</sup> Enabled
- Remote Monitoring
- Alert Notification
- NEMA Enclosure
- Custom Build Available
- Low-Power Draw
- Battery Backup Included
- Workforce Multiplication
- Rugged Components
- 4G LTE Data Transmission
- Multi-Camera Possible
- Portable Configuration
- Multi-Site Monitoring
- Service/Maintenance (Option)
- Health Monitoring (Option)



3151 Briarpark Dr. #125, Houston, TX 77042 | (713) 395-0800 | LENSEC.com





# PerspectiveVMS®

**PVMS ENTERPRISE EDITION - Unlimited Cameras, Advanced Features**  
**PVMS STANDARD EDITION - Up to 100 Cameras, Medium Scope**

Perspective VMS® is an enterprise-level tool for managing security video and data. PVMS includes features based directly on customer input. PVMS Enterprise allows an unlimited number of cameras and servers. There are no software limits. The software is ideal for a distributed network requiring advanced features such as Access Control, Video Analytics, and more.

Perspective VMS® is available in three software editions that scale for the small project managing a limited number of cameras to a large project streaming video and metadata from thousands of cameras. Enterprise or Standard Edition is recommended for LENSEC's solar solution.

## SYSTEM COMPONENTS

LENSEC's solar solution is collection of recommended common off the shelf (COTS) components that leverage Perspective VMS® to incorporate CCTV cameras into a unified security platform.

Each project may require custom solutions that require different COTS components from the list of items detailed here. LENSEC's physical security experts are available to recommend a complete solution that meets the needs of each project using PVMS as part of the solution.

| Solar Solution COTS Hardware (Local Server)   | Solar Solution Software (Local Server)   |
|---|--|
| <b>Server:</b> Rugged Compact Fanless Computer<br><b>Processor:</b> 6th Gen Intel Core I5<br><b>Memory:</b> 1x DDR4 SO-DIMM Socket, 2133 MHz, Up to 16GB<br><b>Power:</b> DC 12 Volt (low power draw)<br><b>Local Disk Storage:</b> 2x 2.5" SATA HDD/SSD<br><b>Temperature:</b> Extreme Range (-40°C ~ +70°C)<br><b>Built-In Switch:</b> x2 GbE LAN Ports w/ PoE+ (expandable)<br><b>Digital I/O:</b> DVI, DP, LAN, COM, USB, Optical Isolated DIO<br><b>Network Communication:</b> 4G LTE Enabled<br><b>Solar Controller:</b> Charge Controller (10 Amps / DC 12 Volts)<br><b>Solar Panels:</b> 150 Watts, quantity & size vary per project<br><b>NEMA Enclosure:</b> Accommodates Equipment & Batteries<br><b>Batteries:</b> x2 Deep Cycle Gel Batteries (DC 12 Volts, 100+ AH)<br><b>Camera:</b> x2 IP PoE Megapixel Cameras (recommended) | <b>Local Server OS:</b> Windows 10 Pro or Windows 10 IoT<br><b>Database:</b> SQL Express 2016<br><b>VMS:</b> Perspective VMS® Standard or Enterprise<br><b>PVMS Includes:</b> Web Server, Archive/Streaming Server, Database Server (running on local hardware)<br><b>Client OS:</b> Windows 10 or Mac OSX Lion recommended<br><b>Client Browser:</b> Google Chrome 56 (or above) OR Internet Explorer 11 or above<br><b>Prerequisites:</b> Internet Information Services 7 or above, Microsoft.NET Framework 4.6<br><b>NOTE:</b> Additional Perspective VMS® Specs Available<br><b>NOTE:</b> Recommended solar build varies based on power and solar availability |
| Solar Solution COTS Hardware (Head End Server)  | Solar Solution Software (Head End Server)  |
| <b>Network Switch:</b> Rugged PoE+ Compact Ethernet Switch<br><b>Switch Ports:</b> x4 10/100Tx (PoE+) + 1x 10/100Tx<br><b>Power:</b> DC 12 Volt (low power draw)<br><b>Network Communication:</b> Local Network Available<br><b>Temperature:</b> Extreme Range (-40°C ~ +75°C)<br><b>Solar Controller:</b> Charge Controller (10 Amps / DC 12 Volts)<br><b>Solar Panels:</b> 150 Watts, quantity & size vary per project<br><b>NEMA Enclosure:</b> Accommodates Equipment & Batteries<br><b>Batteries:</b> x2 Deep Cycle Gel Batteries (DC 12 Volts, 100+ AH)<br><b>Camera:</b> x2 IP PoE Megapixel Cameras (recommended)   | <b>Server OS:</b> Windows Server 2016 (recommended)<br><b>Database:</b> SQL Express 2016<br><b>VMS:</b> Perspective VMS® Standard or Enterprise<br><b>PVMS Includes:</b> Web Server, Archive/Streaming Server, Database Server (running on local hardware)<br><b>Client OS:</b> Windows 10 or Mac OSX Lion (recommended)<br><b>Client Browser:</b> Google Chrome 56 (or above) OR Internet Explorer 11 (or above)<br><b>Prerequisites:</b> Internet Information Services 7 or above, Microsoft.NET Framework 4.6   |

**NOTE:** Additional Perspective VMS® Specs Available. Recommended solar build varies based on power and solar availability.



3151 Briarpark Dr. #125, Houston, TX 77042 | (713) 395-0800 | LENSEC.com

