

A person in a dark suit is seen from behind, sitting at a desk in a control room. They are looking at several computer monitors that display various data visualizations, including charts and graphs. In the background, a large, glowing blue circular interface with a padlock icon is visible, suggesting a security or access control system. The overall scene is dimly lit with a blue color scheme, and a city skyline is visible through a window in the background.

**REDEFINING SECURITY.
SIMPLIFYING CONTROL.**

A PRODUCT BY **LENSEC**

LACS – LENSEC ACCESS CONTROL SYSTEM

LACS (LENSEC Access Control System) is LENSEC's next-generation access control platform designed to manage enrollment, user permissions, door status, schedules, and troubleshooting from one unified interface. It integrates seamlessly with Perspective VMS® and SMOC, giving organizations centralized control over security events, access data, and video—all from a single platform.

CORE CAPABILITIES

- Administration: User enrollment, roles, permissions, troubleshooting
- Credential & Identity Management
- Door & Reader Monitoring (real-time status of locks, doors, alarms)
- Access Zones & Schedules (time-based permissions)
- Alarm Integration (automatic triggers, alerts, video bookmarks)
- Video-Linked Access Events through PVMS
- Full Audit Logging & Compliance Reports

ARCHITECTURE & INTEGRATION

- Open Standards: OSDP, Wiegand, Mercury, HID
- REST API with full function exposure
- SignalR event broadcasting
- MQTT protocol support
- Active Directory integration
- Seamless integration with PVMS & SMOC for unified security

KEY FEATURES



Real-time door & event monitoring



Centralized permissions & schedules



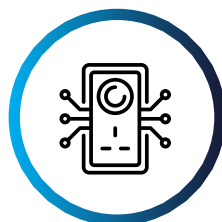
Emergency & mustering management



Time & attendance support



Full reporting & audit logs



Intelligent controller & IO module support

SYSTEM SECURITY

- End-to-end encryption (TLS)
- AES-256 secure communication
- Secure credential technologies (Seos, Desfire EV3)
- System-level protection ensuring secure identity flow from credential to server

ACCESS CONTROL ELEVATED.

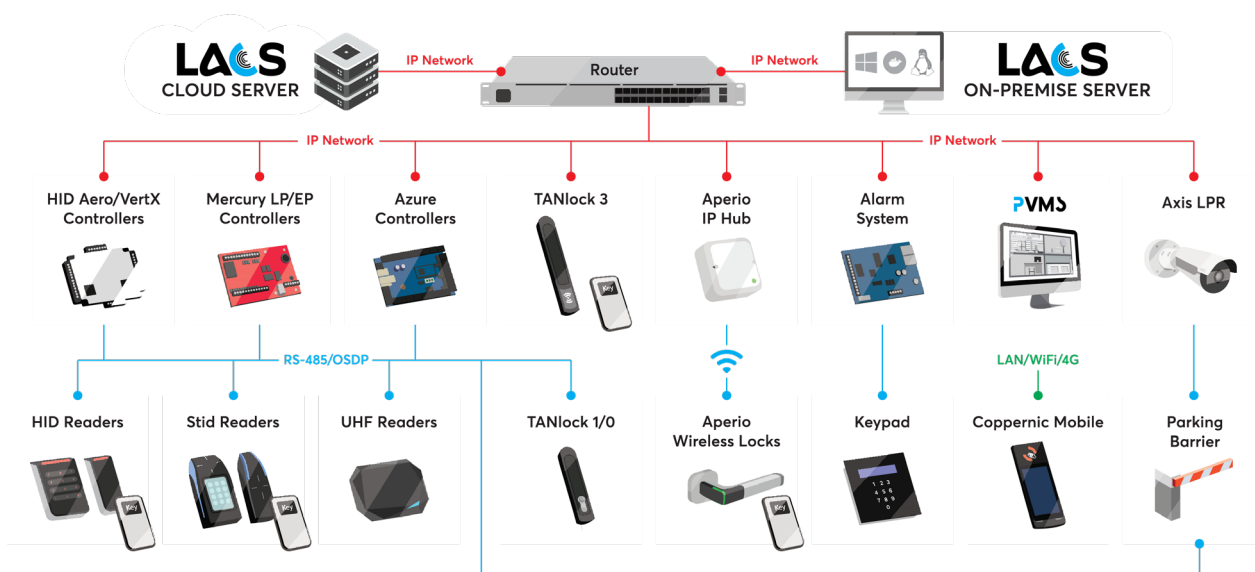
COMPETITIVE ADVANTAGE

- Unified, policy-driven access control
- Native integration with VMS and PSIM systems (PVMS & SMOC)
- Lower TCO vs. multi-system competitors
- Modern, open, secure architecture
- Faster deployment and easier partner integration

THE #1 SECURITY SOLUTION FOR DATA CENTERS


Data is the most critical asset of modern organizations. TANlock rack locks from FATH, Inc. are at the forefront of safeguarding your data center racks. They are directly integrated into LACS, providing security, ease-of-use and compatibility with existing enterprise systems. Use TANlock integration in LACS to create a standalone access control system, or a hardware management layer for your existing one.

LACS ACCESS CONTROL TOPOLOGY



LACS PLATFORM FEATURES

- Unified and open hardware platform – use controllers of your choice from Mercury, HID, Azure Access or Suprema Inc. and benefit from their distinct advantages
- Modern WebUI with dynamic dashboard and notifications
- Interactive floor plans, including event highlighting and direct controls
- Advanced monitoring with customizable alerts and threat levels
- Multi-factor IDs, including built-in HID Origo and STid Mobile credential management
- Mobile Manager application for iOS and Android
- **LACS** Checkpoint mobile reader-controller for mustering and random checks
- Interlock, Anti-passback, scheduled door modes and Holiday exceptions
- Elevator control
- Wireless lock support, including Aperio from ASSA-ABLOY and TANlock server rack locks
- Rule-based automations and action scripts
- Powerful filtering and search capabilities
- Extensive report engine, including Time and Attendance data
- Active Directory support
- Role-based Operator permissions
- Logical DB segmenting
- ID badge template design and printing
- A choice of CCTV / VMS Integrations
- License plate recognition and parking management
- Integrated with Visitor management and Workplace reservation systems
- Highest security standards, including TLS 1.3, OSDP Secure Channel, and AES256 encrypted device communication
- Password policy management
- Automated controller and module firmware updates
- Cross-platform (Windows/Linux) and multi-language support
- Open REST API

 +1 (713) 395-0800

 info@lensec.com

 13100 Wortham Center Drive, 3rd Floor, Houston, TX

 www.lensec.com